



Immuno-Precise Antibodies Ltd.
3204-4464 Markham St
Victoria, BC V8Z 7X8
CANADA
Tel: 1.250.483.0308
Fax: 1.250.483.0309
info@immuno-precise.com

Anti - Salmonid Immunoglobulin - Integra Mouse Monoclonal Antibody (Pro G)

Catalog #: IPA006G
Quantity: 100 µg

Applications

ELISA, WB, Agglutination, FACS,
Immunocytochemistry

Species Cross Reactivity

Salmo

Atlantic Salmon	+
Brown Trout	+

Onchorhynchus

Chinook Salmon	+
Chum Salmon	+
Coho Salmon	+
Sockeye Salmon	+
Rainbow Trout	+

Salvelinus

Arctic Char	+
Brook Trout	+

Negative Controls: China Perch, Zebra Fish -

Background

These mouse monoclonal anti-salmonid immunoglobulin antibodies recognize a variety of heavy chain epitopes on several *Salmonid* species. As a result, these antibodies represent powerful tools for the indirect detection of clinically and economically important salmonid parasites; parasite-specific immunoglobulins from *Salmo*, *Onchorhynchus* and *Salvelinus* may react with our monoclonal anti-salmonid (H-chain) Ig antibodies. These antibodies can be used to monitor levels of serum immunoglobulins in salmon stock, and responses to specific parasites, or to assess the efficacy of salmonid vaccines.

Formulation

Protein G Purified - Integra Bioreactor concentrated tissue culture supernatant (1mg/ml)

Specificity

Oncorhynchus and Salvelinus serum immunoglobulins

Concentration / Suggested Working Dilution

1 mg/ml - 1/400 to 1/1000

Stability

-20 to +4 °C

Immunogen

Rainbow Trout and Atlantic Salmon heavy and light chain immunoglobulins

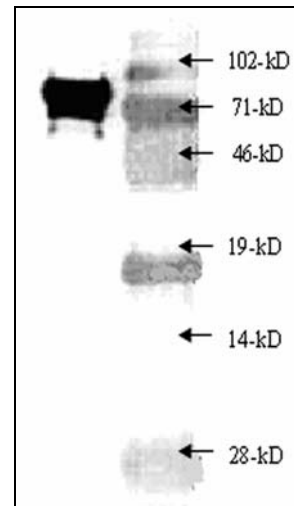
Host/Isotype

IgG2a / mouse

Clone

5F12

Sample Data



Western blot of Atlantic salmon immune serum showing a large H chain band at approximately 71-kD. Primary IPA-5F12 antibody was followed by a goat anti-mouse-HRP antibody. Molecular weight markers are indicated on the right.

To place your order, please contact us by phone 1.250.483.0308, fax 1.250.483.0309 or by email: orders@immuno-precise.com
www.immuno-precise.com

FOR IN VITRO RESEARCH PURPOSES ONLY. NOT INTENDED FOR USE IN HUMAN OR ANIMALS.
Caution: Contains Sodium Azide