



## Anti - Salmonid Immunoglobulin - HRPO Mouse Monoclonal Antibody

Catalog #: IPA006H  
Quantity: 100 ug

### Applications

ELISA, Western Blot

### Species Cross Reactivity

#### *Salmo*

Atlantic Salmon +  
Brown Trout +

#### *Onchorhynchus*

Chinook Salmon +  
Chum Salmon +  
Coho Salmon +  
Sockeye Salmon +  
Rainbow Trout +

#### *Salvelinus*

Arctic Char +  
Brook Trout +

Negative Controls: China Perch, Zebra Fish -

### Background

This mouse monoclonal anti-salmonid immunoglobulin antibody recognizes a variety of heavy chain epitopes on several *Salmonid* species. As a result, this antibody represents a powerful tool for the indirect detection of clinically and economically important salmonid parasites; parasite-specific immunoglobulins from *Salmo*, *Onchorhynchus* and *Salvelinus* may react with our monoclonal anti-salmonid (H-chain) Ig antibodies. This antibody can be used to monitor levels of serum immunoglobulins in salmon stock, and responses to specific parasites, or to assess the efficacy of salmonid vaccines.

### Formulation

Protein A purified, HRPO conjugated, in PBS pH 7.2 with 10 mg/mL BSA as stabilizer and 0.01% (w/v) Gentamicin sulfate as preservative

### Specificity

Oncorhynchus and Salvelinus serum immunoglobulins

### Concentration

1 mg/mL

### Stability

-20 to +4 °C

### Immunogen

Rainbow Trout and Atlantic Salmon Heavy and Light Chain Immunoglobulins

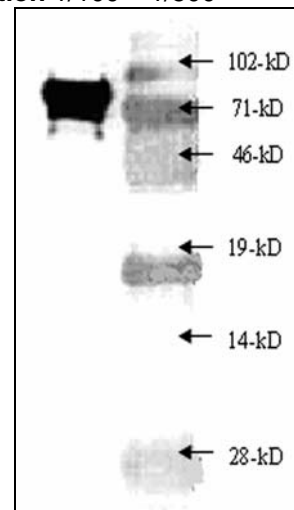
### Host/Isotype

IgG2a / mouse

### Clone

5F12

### Suggested Dilution 1/100 – 1/500



**Sample Data:** Western blot of Atlantic salmon immune serum showing a large H chain band at approximately 71-kD as detected by IPA006H antibody. Molecular weight markers are indicated on the right.

To place your order, please contact us by phone 1.250.483.0308, fax 1.250.483.0309 or by email: [orders@immuno-precise.com](mailto:orders@immuno-precise.com)  
[www.immuno-precise.com](http://www.immuno-precise.com)

**FOR IN VITRO RESEARCH PURPOSES ONLY. NOT INTENDED FOR USE IN HUMAN OR ANIMALS.**