



Immuno-Precise Antibodies Ltd.  
 3204-4464 Markham St  
 Victoria, BC V8Z 7X8  
 CANADA  
 Tel: 1.250.483.0308  
 Fax: 1.250.483.0309  
 info@immuno-precise.com

## Anti - Salmonid Immunoglobulin - Integra Mouse Monoclonal Antibody

Catalog #: IPA006I  
 Quantity: 500 µL

### Applications

ELISA, WB, Agglutination, FACS,  
 Immunocytochemistry

### Species Cross Reactivity

<i>Salmo</i>	
Atlantic Salmon	+
Brown Trout	+
<i>Onchorhynchus</i>	
Chinook Salmon	+
Chum Salmon	+
Coho Salmon	+
Sockeye Salmon	+
Rainbow Trout	+
<i>Salvelinus</i>	
Arctic Char	+
Brook Trout	+
Negative Controls: China Perch, Zebra Fish	-

### Background

These mouse monoclonal anti-salmonid immunoglobulin antibodies recognize a variety of heavy chain epitopes on several *Salmonid* species. As a result, these antibodies represent powerful tools for the indirect detection of clinically and economically important salmonid parasites; parasite-specific immunoglobulins from *Salmo*, *Onchorhynchus* and *Salvelinus* may react with our monoclonal anti-salmonid (H-chain) Ig antibodies. These antibodies can be used to monitor levels of serum immunoglobulins in salmon stock, and responses to specific parasites, or to assess the efficacy of salmonid vaccines.

### Formulation

Integra Bioreactor concentrated tissue culture supernatant (1mg/ml)

### Specificity

Oncorhynchun and Salvelinus serum immunoglobulins

### Concentration / Suggested Working Dilution

1 mg/ml - 1/100 to 1/500

### Stability

-20 to +4 °C

### Immunogen

Rainbow Trout and Atlantic Salmon heavy and light chain immunoglobulins

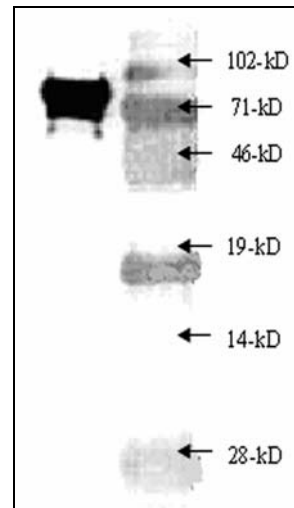
### Host/Isotype

IgG2a / mouse

### Clone

5F12

### Sample Data



Western blot of Atlantic salmon immune serum showing a large H chain band at approximately 71-kD. Primary IPA-5F12 antibody was followed by a goat anti-mouse-HRP antibody. Molecular weight markers are indicated on the right.

To place your order, please contact us by phone 1.250.483.0308, fax 1.250.483.0309 or by email: [orders@immuno-precise.com](mailto:orders@immuno-precise.com)  
[www.immuno-precise.com](http://www.immuno-precise.com)

**FOR IN VITRO RESEARCH PURPOSES ONLY. NOT INTENDED FOR USE IN HUMAN OR ANIMALS.**  
**Caution: Contains Sodium Azide**