



**ImmunoPrecise  
Antibodies Ltd.**

Immuno-Precise Antibodies Ltd.  
3204-4464 Markham St  
Victoria, BC V8Z 7X8  
CANADA  
Tel: 1.250.483.0308  
Fax: 1.250.483.0309  
info@immuno-precise.com

## **Anti – *Francisella tularensis* Mouse Monoclonal Antibody**

**Catalog #: IPA014  
Quantity: 500 µL**

### **Applications**

ELISA, Blot, Histochemistry, Fluorescence

### **Species Cross Reactivity / Specificity**

*F. tularensis* specificity

### **Host / Isotype**

IgG3 / mouse

### **Clone**

ftul

### **Background**

*Francisella tularensis* sub species holarctica is a small Gram-negative aerobic bacillus with two main serotypes: Jellison Type A and Type B. Type A is the more virulent form. The causative agent of the disease was named after Dr. Edward Francis and the location where the organism was discovered, Tulare County, California. Human tularemia presents as an indolent ulcer at site of infection, accompanied by swelling of the regional lymph nodes (ulceroglandular); sudden onset of pain and fever, fever generally lasts 3 - 6 weeks without treatment; inhalation may be followed by a pneumonic disease or primary systemic (typhoidal) picture; type B strains 5-15% fatality rate; type A strains approximately 35% mortality from pulmonary tularemia. This monoclonal antibody was prepared using whole, killed bacteria. The clone recognizes the lipopolysaccharide surface molecule. These antibodies have also been tested in immunofluorescence on living cells at a 1/500 dilution with excellent results (data not shown)

### **Reference**

Cowley SC, Myltseva SV, Nano FE. Phase variation in *Francisella tularensis* affecting intracellular growth, lipopolysaccharide antigenicity and nitric oxide production. *Mol Microbiol.* 1996 May;20(4):867-74.

### **Formulation**

500 µL - Integra, contains 0.05% NaN<sub>3</sub>

### **Concentration / Dilution**

Integra – 1 mg/mL.

Use at 1/200 – 1/400 dilution

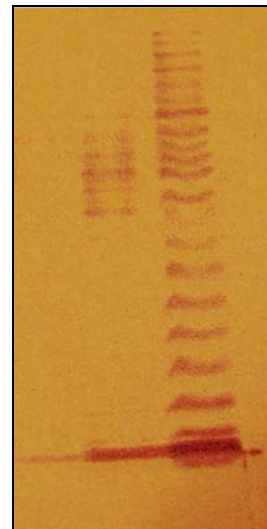
### **Stability / Storage**

-20 to +4 °C

### **Immunogen**

Whole, killed bacteria

### **Sample Data**



### **Western blot**

*F. tularensis* showing the distinct LPS banding pattern. Primary anti- *F. tularensis* antibody from undiluted tissue culture supernatant was followed by a goat anti-mouse-HRP antibody.

To place your order, please contact us by phone 1.250.483.0308, fax 1.250.483.0309 or by email: [orders@immuno-precise.com](mailto:orders@immuno-precise.com)  
[www.immuno-precise.com](http://www.immuno-precise.com)

**FOR IN VITRO RESEARCH PURPOSES ONLY. NOT INTENDED FOR USE IN HUMAN OR ANIMALS.  
Caution: Contains Sodium Azide**